


Department of Engineering
Dan Gaillet, P.E., County Engineer

3137 South Liberty Street, Canton, MS 39046
Office (601) 790-2525 FAX (601) 859-3430

MEMORANDUM

March 13, 2018

To: Sheila Jones, Supervisor, District I
Trey Baxter, Supervisor, District II
Gerald Steen, Supervisor, District III
David Bishop, Supervisor, District IV
Paul Griffin, Supervisor, District V

From: Dan Gaillet, P.E. 
County Engineer

Re: Final Plat
Fall's Crossing, Phase 6

SSR Development, LLC submitted a final plat of Fall's Crossing, Phase 6 to the County for approval. With approximately 39.2 acres and 50 lots ranging from .25 to .5 acres. This development is located off Catlett Road.

The development has met the requirements of the County; therefore, the Engineering Department recommends approval.

SHEILA JONES
District One

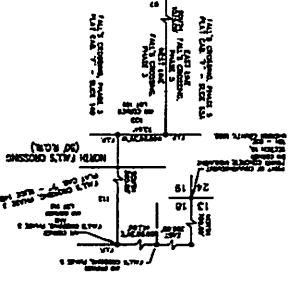
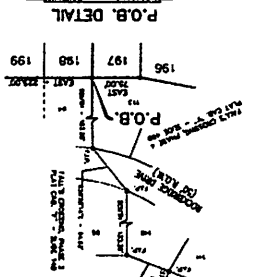
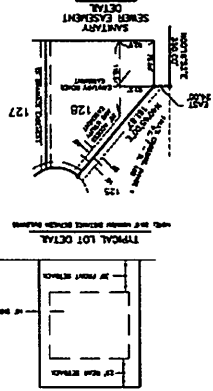
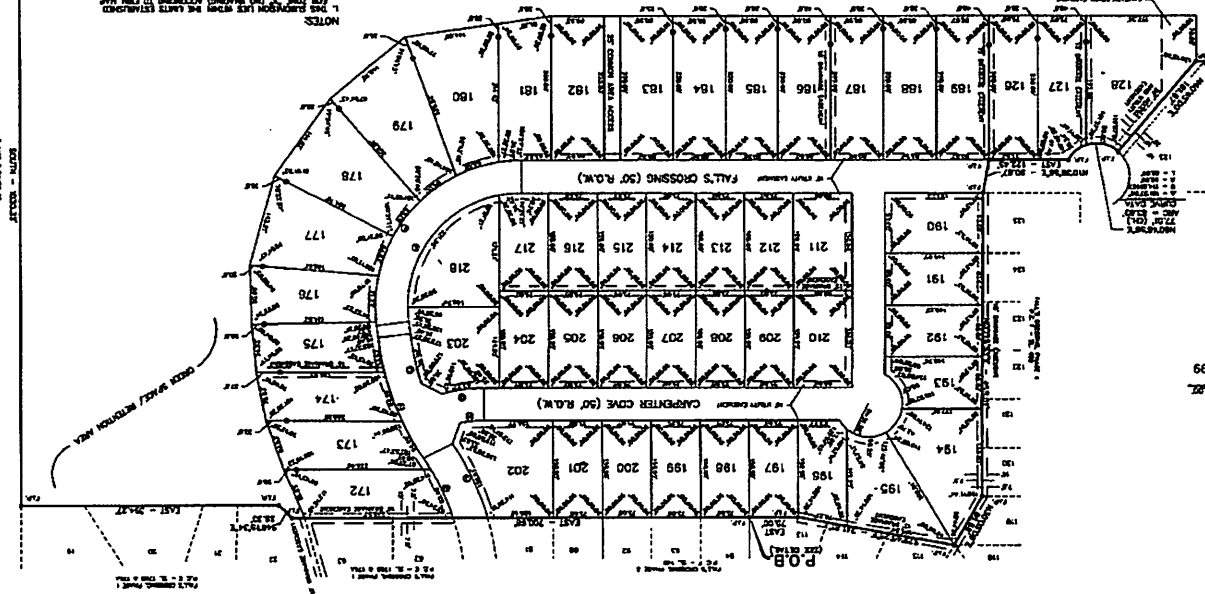
TREY BAXTER
District Two

GERALD STEEN
District Three

DAVID BISHOP
District Four

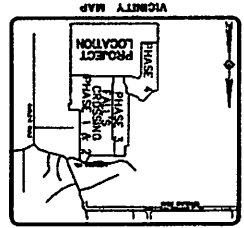
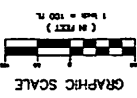
PAUL GRIFFIN
District Five

- NOTES:
1. THE PERSONS LIST WITHIN THE LOTS ESTABLISHED FOR THIS PHASE OF DEVELOPMENT SHALL BE LIMITED TO THE PERSONS LISTED IN THE LOTS.
 2. THE PERSONS LISTED WITHIN THE LOTS ESTABLISHED FOR THIS PHASE OF DEVELOPMENT SHALL BE LIMITED TO THE PERSONS LISTED IN THE LOTS.
 3. THE PERSONS LISTED WITHIN THE LOTS ESTABLISHED FOR THIS PHASE OF DEVELOPMENT SHALL BE LIMITED TO THE PERSONS LISTED IN THE LOTS.
 4. THE PERSONS LISTED WITHIN THE LOTS ESTABLISHED FOR THIS PHASE OF DEVELOPMENT SHALL BE LIMITED TO THE PERSONS LISTED IN THE LOTS.
 5. THE PERSONS LISTED WITHIN THE LOTS ESTABLISHED FOR THIS PHASE OF DEVELOPMENT SHALL BE LIMITED TO THE PERSONS LISTED IN THE LOTS.
 6. THE PERSONS LISTED WITHIN THE LOTS ESTABLISHED FOR THIS PHASE OF DEVELOPMENT SHALL BE LIMITED TO THE PERSONS LISTED IN THE LOTS.
 7. THE PERSONS LISTED WITHIN THE LOTS ESTABLISHED FOR THIS PHASE OF DEVELOPMENT SHALL BE LIMITED TO THE PERSONS LISTED IN THE LOTS.
 8. THE PERSONS LISTED WITHIN THE LOTS ESTABLISHED FOR THIS PHASE OF DEVELOPMENT SHALL BE LIMITED TO THE PERSONS LISTED IN THE LOTS.
 9. THE PERSONS LISTED WITHIN THE LOTS ESTABLISHED FOR THIS PHASE OF DEVELOPMENT SHALL BE LIMITED TO THE PERSONS LISTED IN THE LOTS.
 10. THE PERSONS LISTED WITHIN THE LOTS ESTABLISHED FOR THIS PHASE OF DEVELOPMENT SHALL BE LIMITED TO THE PERSONS LISTED IN THE LOTS.



FALLS CROSSING, PHASE 6
 SITUATED IN THE
 NW 1/4 OF SECTION 19
 TOWNSHIP 8 NORTH, RANGE 2 EAST
 MADISON COUNTY, MISSISSIPPI

PLANNED & SURVEYED BY
H D LANG AND ASSOCIATES, INC.
 ENGINEERS / LAND SURVEYORS
 4008 NORTH STATE STREET
 JACKSON, MISSISSIPPI
 39201-0000



FALL'S CROSSING, PHASE 6
SITUATED IN THE
NW 1/4 OF SECTION 19
TOWNSHIP 8 NORTH, RANGE 2 EAST
MADISON COUNTY, MISSISSIPPI

PLATTED & SURVEYED BY
H D LANG AND ASSOCIATES, INC.
ENGINEERS / LAND SURVEYORS
4088 NORTH STATE STREET
JACKSON, MISSISSIPPI
9079 963-6886

SURVEYOR'S CERTIFICATION
STATE OF MISSISSIPPI
COUNTY OF MADISON

I, Donald L. McDonald, Professional Surveyor, do hereby certify that at the request of the undersigned Owner, I have subdivided and platted the following described land being situated in the Northwest 1/4 of Section 19, T8N-R2E, Madison County, Mississippi:

Commence at an existing concrete monument marking the Southwest corner of Section 19, T8N-R2E, with part one being the Northwest corner of the abutted Section 18, T8N-R2E and run thence North for a distance of 702.80 feet to a point; run thence East for a distance of 394.28 feet to a point; run thence North 89 degrees 52 minutes 33 seconds West for a distance of 713.64 feet to an existing 1/2" iron pin; run thence South for a distance of 1,022.00 feet to an existing 1/2" iron pin; run thence South 18 degrees 02 minutes 02 seconds East for a distance of 58.54 feet to an existing 1/2" iron pin; run thence South 23 degrees 20 minutes 28 seconds East along the North line of said Fall's Crossing, Phase 3 for a distance of 412.90 feet to an existing 1/2" iron pin; run thence South 23 degrees 20 minutes 28 seconds East along the North line of said Fall's Crossing, Phase 3, a subdivision according to the map or plat thereof, on the end of record in the abstract of the Choctaw Court in and for said County and State, do hereby certify that the monuments and markers shown hereon are in place on the ground and the plat and plan shown and described hereon are a true and correct representation of a survey by the accuracy designated in the subdivision regulations for Madison County, Mississippi.

Where my signature this the _____ day of _____, 20____

 Donald L. McDonald, Professional Surveyor

SURVEYOR'S CERTIFICATE OF COMPLIANCE
STATE OF MISSISSIPPI
COUNTY OF MADISON

I, Donald L. McDonald, Professional Surveyor, do hereby certify that the monuments and markers shown hereon are in place on the ground and the plat and plan shown and described hereon are a true and correct representation of a survey by the accuracy designated in the subdivision regulations for Madison County, Mississippi.

Where my signature this the _____ day of _____, 20____

 Donald L. McDonald, Professional Surveyor

CERTIFICATE AND DEDICATION OF OTHER
STATE OF MISSISSIPPI
COUNTY OF MADISON

I, William J. Shanks, Co-Manager of SSR Development, LLC, a Mississippi Limited Liability Company, do hereby certify that the aforementioned in the corner of the land described in the foregoing certificate of Donald L. McDonald, Professional Surveyor, and that as Co-Manager of said SSR Development, LLC, has caused the same to be subdivided and platted as shown hereon, and hereby adopt this plat and dedication as the true act and deed of said SSR Development, LLC, and have designated the same as Fall's Crossing, Phase 6 and dedication the street rights-of-way and drainage easements as shown hereon for public use forever.

Where my signature this the _____ day of _____, 20____

By _____
 William J. Shanks, Co-Manager

ACKNOWLEDGMENT
STATE OF MISSISSIPPI
COUNTY OF MADISON

Personally appeared before me, the undersigned officer in and for the jurisdiction aforesaid, the abovesaid William J. Shanks, who acknowledged to me that he is Co-Manager of SSR Development, LLC, a Mississippi Limited Liability Company, the owner, who acknowledged to me that he signed and delivered this plat and the certificate thereon as his own act and deed, for and on behalf of said SSR Development, LLC, after being advised as to do, and Donald L. McDonald, Professional Surveyor, who acknowledged to me that he signed and delivered this plat and the certificate thereon as his own act and deed, on the day and year herein mentioned.

Thus done at my hand and seal of office this the _____ day of _____, 20____

 My Commission Expires: _____
 Notary Public

COUNTY ENGINEER'S RECOMMENDATION
STATE OF MISSISSIPPI
COUNTY OF MADISON

I have examined this plat and find it conforms to all conditions set forth in the preliminary plat as approved by the Board of Supervisors of Madison County, Mississippi, and thus recommend final approval.

By _____
 Don Gilman, P.E., County Engineer

APPROVAL OF THE BOARD OF SUPERVISORS
STATE OF MISSISSIPPI
COUNTY OF MADISON

I hereby certify that this is a true copy and that this plat was approved by the Board of Supervisors of Madison County in session at the _____ day of _____, 20____

Madison County Board of Supervisors

By _____
 Shela James, Board President

Attest: _____
 Roney Lett, Choctaw Clerk

CERTIFICATE OF COMPARISON
STATE OF MISSISSIPPI
COUNTY OF MADISON

We, Roney Lett, Choctaw Clerk and Donald L. McDonald, Professional Surveyor, do hereby certify that we have carefully compared this plat of Fall's Crossing, Phase 6 with the original thereof, as made by said Donald L. McDonald, Professional Surveyor, and find it to be a true and correct copy of said map or plat.

Thus done at my hand and seal of office this the _____ day of _____, 20____

 Donald L. McDonald, PS

 Roney Lett, Choctaw Clerk

By _____, C.C.

FILED AND RECORDED
STATE OF MISSISSIPPI
COUNTY OF MADISON

I, Roney Lett, Clerk of the Choctaw Court in and for said County and State, do hereby certify that the filed plat of Fall's Crossing, Phase 6 was that for record in my office on this the _____ day of _____, 20____, and was duly recorded in Plat Cabinet _____ at Station _____ of the records of maps and plats of land in Madison County, Mississippi.

Thus done at my hand and seal of office this the _____ day of _____, 20____

 Roney Lett, Choctaw Clerk

By _____, C.C.